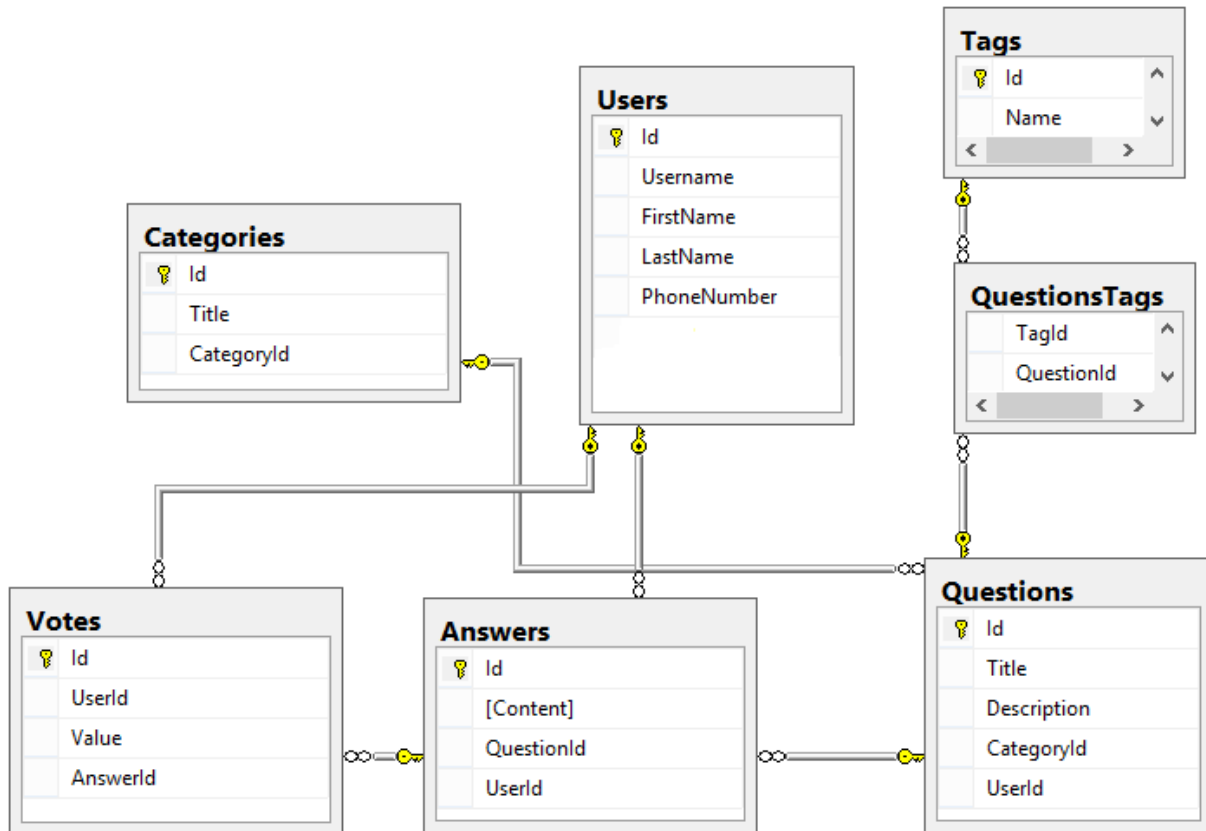


Data Modeling and E/R Diagrams

1. Create the following database diagram in SQL Server.



There are two missing relationships. Your task is to find the missing relationships between tables, then create the following database diagram in SQL Server with missing relationships.

2. Create a data model for typical university in SQL Server.

Typical universities have: faculties, departments, professors, students, courses, etc. Faculties have name and could have several departments. Each department has name, professors and courses. Each professor has name, a set of titles (Ph. D, academician, senior assistant, etc.) and a set of courses. Each course consists of several students. Each student belongs to some faculty and to several of the courses.

3. Create the same data model in MySQL.

Your task is to create the same data model for typical university from the previous task in MySQL.